

# Co-Working Space Available to Rent

## INFORMATION PACK

This pack will provide you with all the information you need about renting co-working space with Creative England

1. About Creative England
  2. The Space
  3. The Deal
  4. How to find out more
- 

# 1. About Creative England

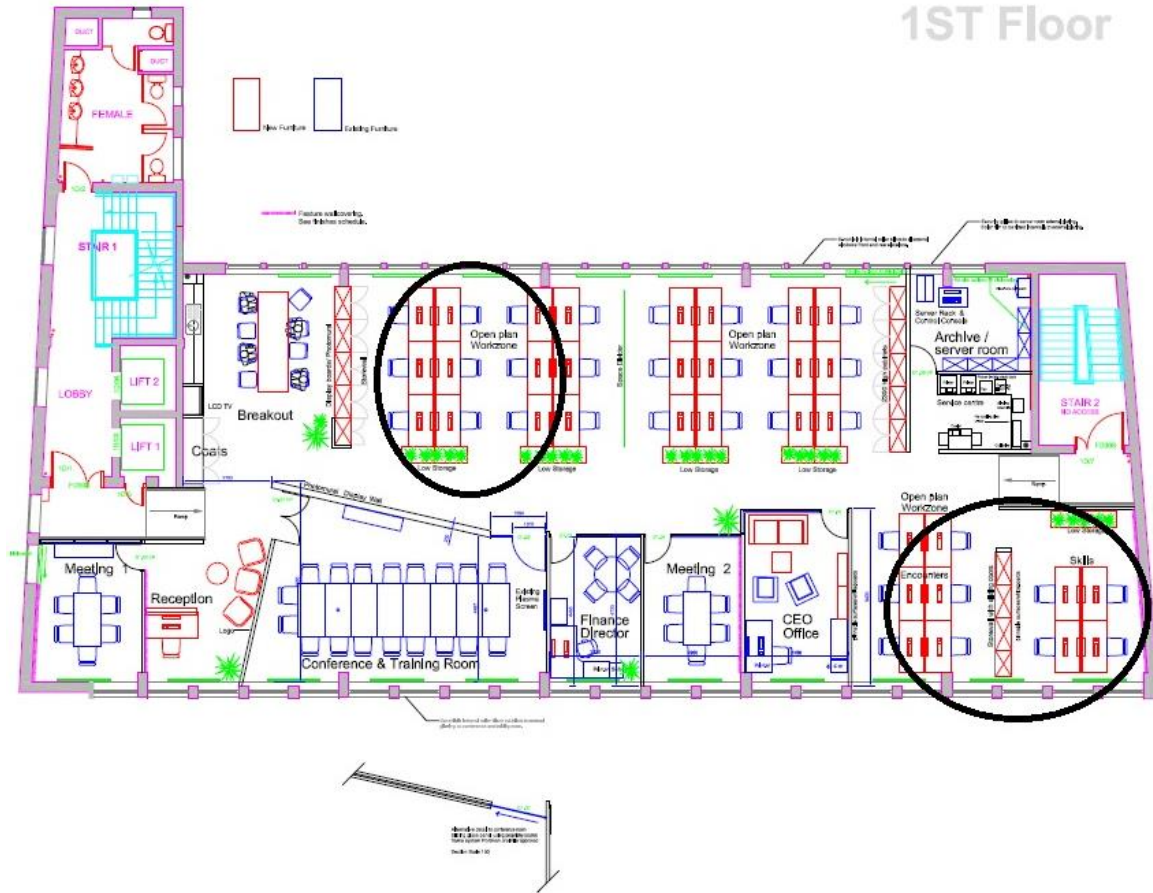
Creative England is dedicated to the growth of the creative industries.

We invest in talented people and their creative ideas, nurturing our richly diverse games, TV, film and digital media industries. From direct investment and loans to business mentoring; we champion the best ideas of talented people and their businesses.

We mobilise public and private resources to garner as much support and investment for the creative industries as possible. We work with a wide range of partners and investors from commercial brands and companies such as Google, Facebook and KPMG to local authorities, cultural bodies and universities, national government, and the European Commission.

[www.creativeengland.co.uk](http://www.creativeengland.co.uk)

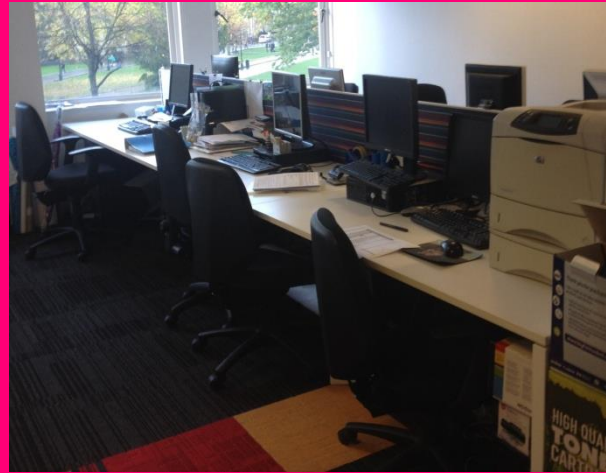
# 2. The Space



Circled in black on the plan is the desk space available to let.

design at work	
Creative England	
College House	
Proposed 1st Floor Layout	
Project	CRE21804GA
Date	May 2012
File name	1st floor
This document is the property of Creative England and should not be distributed outside of the organization without the express written consent of Creative England.	

# The Space

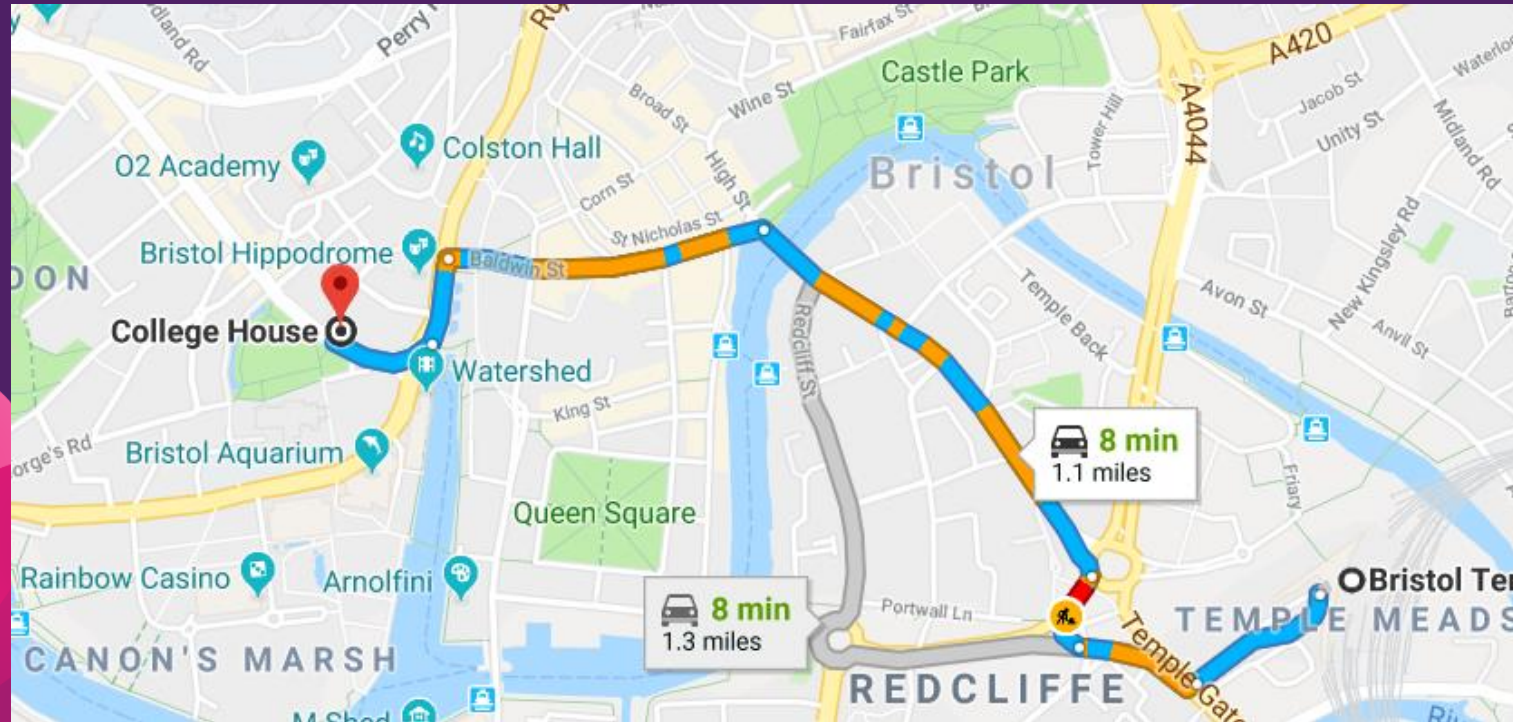


# The Space





# The Space



# 3. The Deal

**NUMBER OF DESKS AVAILABLE:** 19

**LENGTH OF LEASE:** Flexible, negotiable

**COST:** £275 per desk per month (plus any applicable VAT)

**LOCATION:** 1<sup>st</sup> Floor College House, 32-36 College Green, Bristol, BS1 5SP.

## **DESCRIPTION:**

Five-floor office building constructed in 1998 and newly refurbished.

Located on College Green, close to the City Centre, with good local amenities.

10 minute drive / 20 minute walk from Bristol Temple Meads train station.

Collaborative working opportunities.

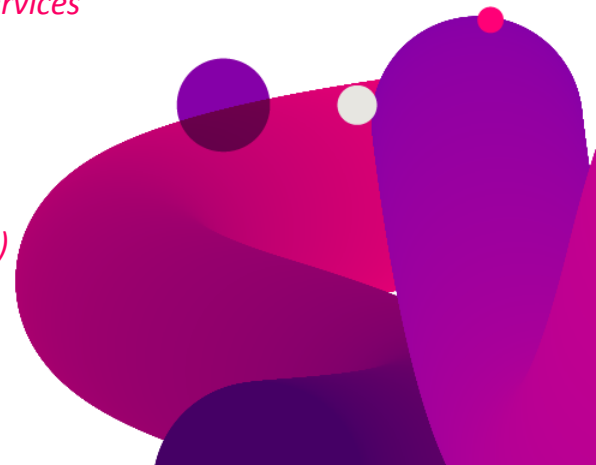
3 meeting rooms seating 8 – 22 people.

Communal kitchen facilities.



# 3. The Deal, what's included?

- ✓ **Rent**
- ✓ **Site service charges**
- ✓ **Business rates**
- ✓ **Utilities**
- ✓ **Shared facilities; WC, shared kitchen with use of tea, coffee, milk, water**
- ✓ **Front house reception; visitors can report to our main reception** *(reception services such as administrative support and switchboard are not included)*
- ✓ **Meeting rooms** *(allocated free use dependent on lease term)*
- ✓ **High speed Wi-fi**
- ✓ **Post delivery and collection service** *(including an allocated amount for posting out)*





## 4. Want to find out more?

If you have any questions or would like to come and take a look around please contact:

**Julia Morrish**

Operations Co-ordinator (Bristol) & PA to CFO

[Julia.Morrish@creativeengland.co.uk](mailto:Julia.Morrish@creativeengland.co.uk)

Tel: (+44) 0117 952 9982

